



SmartTouch®
Controller



Foot pedal
Pro & Air Pro only



- Perfect heat & pressure distribution
- Double plate of 40x50 cm (16x20")
- Robust frame
- Important height between plates
- User friendly
- Bi-manual control (+ foot pedal control on Duplex Pro and Air Pro version)
- New SmartTouch® interface
- Automatic translation from one plate to another (on Duplex Pro / Air Pro version)
- Suitable for laser transfer applications & pretreatment drying
- Ideal for high production
- Manufactured in France
- 2-year guarantee on the machine
- 10-year guarantee on heating elements



Set programs



QuickRelease®
system



3200W

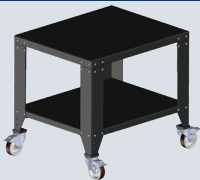


Pneumatic

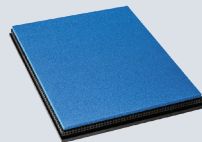


Membrane
(AIR PRO version)

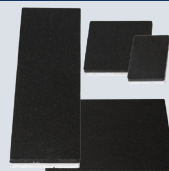
OPTIONAL ACCESSORIES



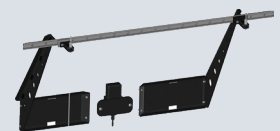
Support table



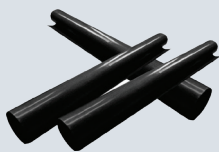
DTG plate



Set of 4 plates



Laser pointer



Teflon Sheet



Lower heating plate



Nomex® cover (included)



Compressor

Email

sales@sefa.fr
support@sefa.fr
www.sefa.fr



Phone

Office : + 33 4 68 74 05 89
Fax : + 33 4 68 74 24 08



Address

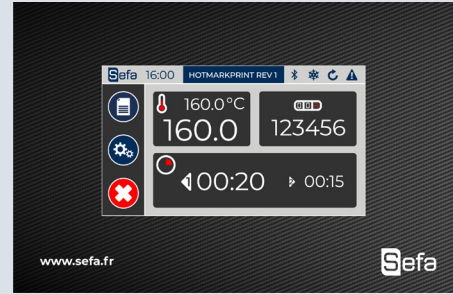
SEFA SAS
Z.I. PASTABRAC
11 260 ESPERAZA (FR)



TECHNICAL CHARACTERISTICS

Type	Pneumatic
Operation	Swing - Rotating plate
Platen size	40x50 cm / 16x20"
Max thickness	45 mm
Weight	193 Kg / 425 lb
Pressure	625 g/cm ²
°C / °F Max	220 °C / 429 °F
Power	3200 W
Power supply	240 V Single-phase
Amperage	14 A
Applications	Flex, direct-to-garment, pre-treatment, sublimation on rigid substrate, textile sublimation, laser transfer, screen printing
Dimensions	713x891x1099 mm 28x35x43"

SETTINGS



New **SmartTouch®** controller developed by Sefa

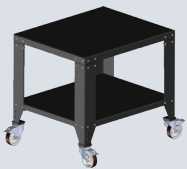
Recipes menu with adaptive regulation parameters depending on the job: flex, sublimation on textile, sublimation on rigid substrates, DTG...

Advanced electronics

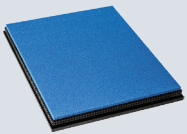
- Fully editable recipes menus
- Independent time for each plate
- Multi timer (up to 4 different times)
- Cycles counters
- Stop cycle function
- ECO GREEN mode

From 0 to 600 s (precision +/- 1%).
From 15 to 220°C (precision +/- 1%).
Heating time to reach 180°C : 10 min.

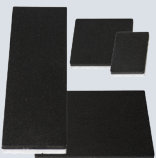
OPTIONAL ACCESSORIES



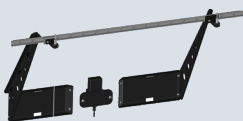
TAB-98 PRO / R
Support table (optional castors available).



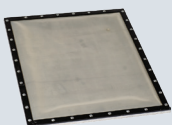
PLA-DRY M
Sponge plate to dry pretreated clothes.



PLA-SET
Set of 4 plates
12 x 8 cm, 15 x 15 cm,
12 x 45 cm, 25 x 30 cm.



CROI-160
2-laser system to place your transfers with more precision (exists with 4).



PLA-3035 AIRCLAM
Membrane plate for Duplex Air Pro only
30 x 35 cm.



ACC-CHAUD-INF
Lower 40 x 50 cm heating plate that fits all SEFA presses (individual electronic box included).



COMP-111
Silent compressor 42dB 50L.
111L/min.



180° reversible
C-shaped lower
part with Quick
Release system

DIMENSIONS



Box weight CAI-DU-PRO : 46 kg